

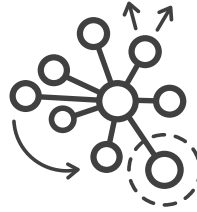
# Leader Network Diagnostic



*Developing your professional network is the single most important predictor of career success<sup>1</sup>*

## Is your team getting the most from their professional networks?

Adeption has partnered with Network Leader to offer the Leader Network Diagnostic (LND), a powerful networking mapping assessment which guides individuals in visualizing, analyzing, and improving their professional networks. This science-based analytical assessment provides insights and strategies to help leaders and professionals:



- Navigate and thrive in more dynamic organizational structures
- Accelerate their own organization's agility by boosting innovation ties
- Connect across critical boundaries increasing the information flow between silos

## WHAT TO EXPECT:

This interactive 20-minute self assessment helps individuals visualize and understand their professional networks.

The assessment is wrapped in an in-depth and reflective Adeption experience that includes videos from the creators who help participants make sense of the data and create an action plan for network improvements.

## HOW THE LND BENEFITS LEADERS :

The LND is a network mapping tool that helps individuals identify which relationships enable their work, careers, and professional goals.

It provides an analysis of how effective an individual's core professional network is and provides suggestions on how to strengthen their network.

## At a Glance



### AUDIENCE

Any leader or team wanting to assess and leverage the full potential of their professional network



### COMMITMENT

40-minute assessment and debrief (digital, group, or 1-1)

Optional LND Retake to identify the progress and highlight any remaining gaps to improve on.

## RESEARCH BACKING

Network Leader's assessments and approach has helped over 40,000 professionals analyze, understand, and intentionally build their networks to create greater value for their teams and organization.

Over 40 years of network science shows that individuals with effective networks are:

- More adept at supporting the goals of the organization
- Promoted more rapidly
- More likely to be retained by the organization
- Receive higher bonuses
- Adapt to changing environments more quickly
- Better at leading change and solving difficult work challenges
- Viewed by their peers as more influential
- Rated in the top 20% of leaders in their organization

<sup>1</sup> Burt, R. S. (2005). Brokerage and closure: An introduction to social capital. Oxford University Press.

## LND Assesses 4 Key Principles:



### OPENNESS

Is the individual in connection with the right people to provide them with new information to get their job done? How much information redundancy is the network providing them?



### DIVERSITY

What organizational boundaries do an individual's relationships cross? Are there critical boundaries their network needs to span to help them achieve their professional goals?



### DEPTH

How deep are the individual's relationships inside their core professional network? Do they have the right type of trust to effectively leverage their relationships when needed?



### RESOURCES

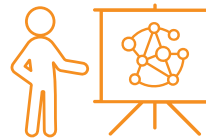
Does the network they've built provide the resources they need to achieve current and future success?

## Outcomes

As a result of taking the LND, professionals will be better able to:

- Expand the flow of information and opportunities in their network.
- Grow relationships that enable them to more easily navigate complex or flattened hierarchies.
- Identify relationships to develop that cross critical boundaries or provide key resources that are missing from their network.
- Strengthen relationships that will increase the success of their professional goals.
- Add value to others by connecting people in their network who would benefit most from knowing each other.

## Certified Trainers



Join us in making the complex world of network research and analysis easy for anyone to understand and apply.

LND Certified Trainers get access to a second Adeption training course which guides them through presenting and debriefing the diagnostic as well as training materials and admin overview.



*"It's made a huge difference in the way I've used my network at work, and also how I'm perceived at work because it's strengthened so many different relationships"*

Two powerful stories of how the Leader Network Diagnostic made an impact on people's careers

[www.networkleader.com/video-category/customer-stories](http://www.networkleader.com/video-category/customer-stories)



Connect with us to learn more about how to bring scalable network development to your teams.

[adeption.io](http://adeption.io) | [hello@adeption.io](mailto:hello@adeption.io)